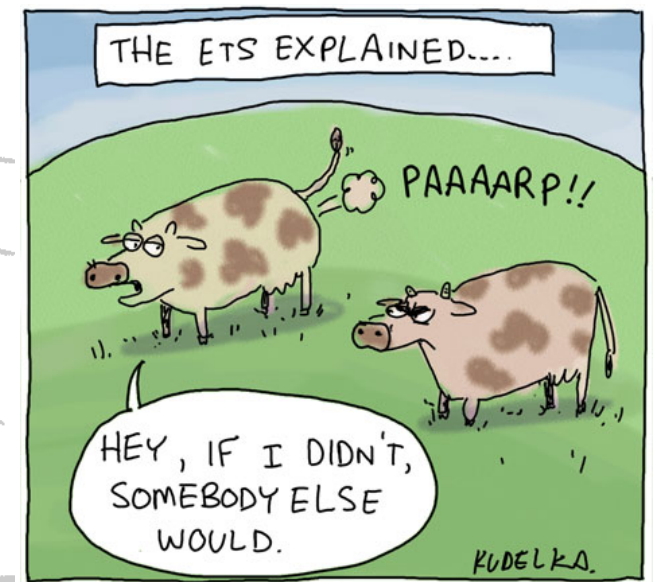
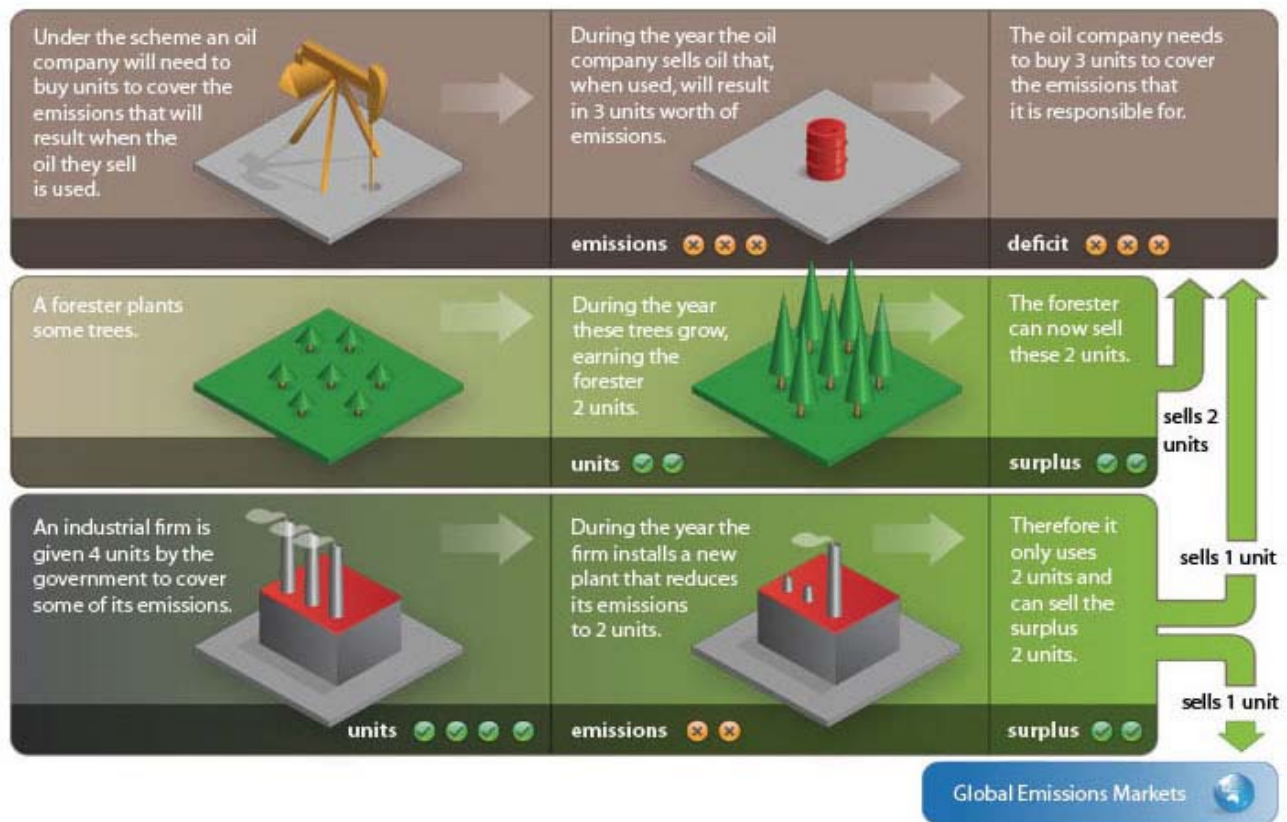


*"The selling of carbon emissions reflects the economics and political glitches behind treating corporations like people."*



# Image Sources

- <http://4.bp.blogspot.com/-b0kaN8jmc1Y/TZ5lj6nyJ5I/AAAAAAAAAE k/4bUGcWAonxQ/s1600/co2.jpeg>
- <http://upload.wikimedia.org/wikipedia/commons/thumb/d/d6/Coal power plant Datteln 2 Crop1.png/300px-Coal power plant Datteln 2 Crop1.png>
- [http://www.climatepedia.org/images\\_pedia/cap-and-trade-carbon-markets-emissions-trading-diagram.jpg](http://www.climatepedia.org/images_pedia/cap-and-trade-carbon-markets-emissions-trading-diagram.jpg)
- [http://blogs.cas.suffolk.edu/amaat24/files/2012/02/carbon\\_credit1.gif](http://blogs.cas.suffolk.edu/amaat24/files/2012/02/carbon_credit1.gif)
- [http://www.thepunch.com.au/images/uploads/ets\\_explained\\_kude lka.jpg](http://www.thepunch.com.au/images/uploads/ets_explained_kude lka.jpg)
- <http://www.climatechange.govt.nz/emissions-trading-scheme/about/images/ets-diagram.jpg>

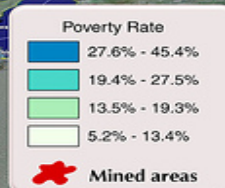


*"Environmental Injustice is a gateway to political, legal, and technological unfairness and ultimately leads to sustainability problems."*

**2.8 BILLION GALLONS OF TOXIC COAL SLUDGE**

**COAL LOADING SILO**  
**MARSH FORK ELEMENTARY SCHOOL**

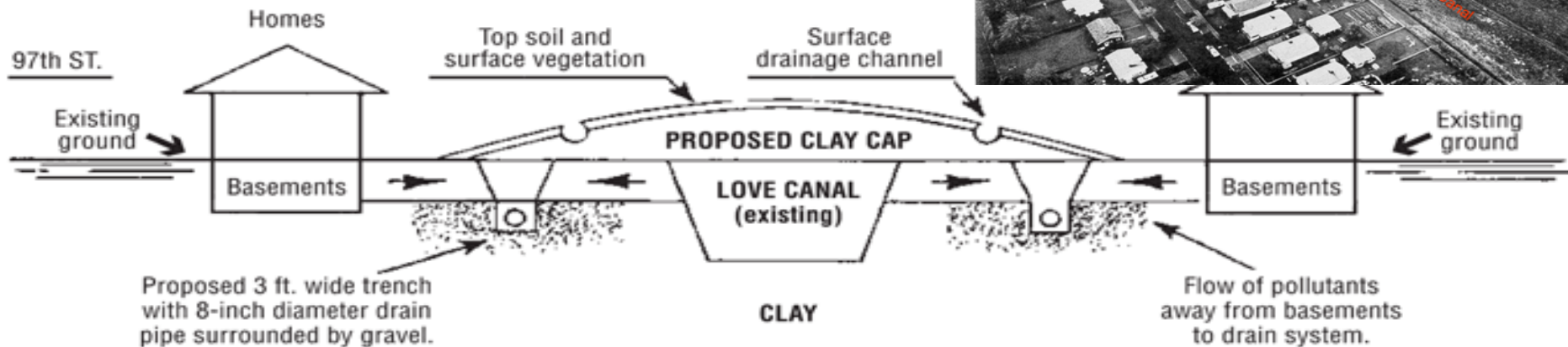
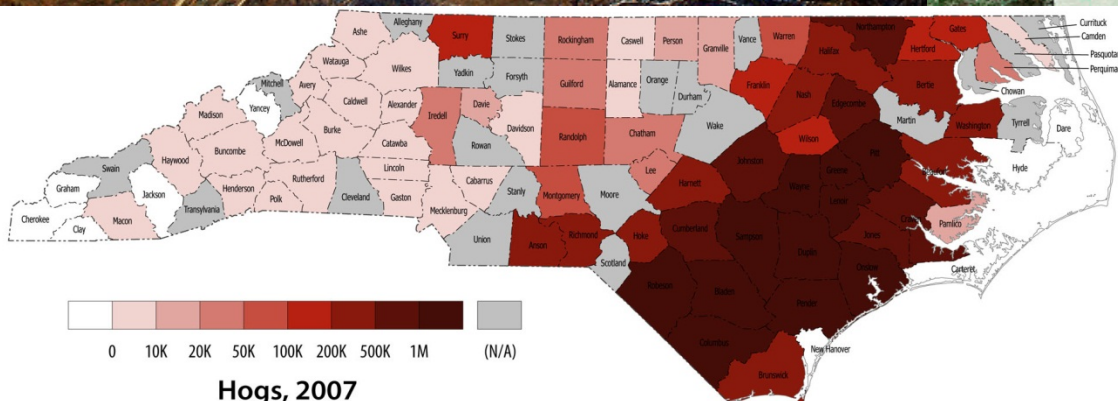
## Poverty Rates<sup>†</sup> and Surface Mining<sup>††</sup> in Appalachia, 2000



<sup>†</sup> Ratio of persons below the poverty level to the total number of persons for whom poverty status has been determined.  
Data source: U.S. Census Bureau, 2000  
Map source: Appalachian Regional Commission, 2004

<sup>††</sup> Surface mined areas in the Central Appalachian Coal Basin, September, 2005.  
Data and map source: Appalachian Voices, 2006

APPALACHIAN VOICES



# Image Sources

- <http://www.learnnc.org/lp/media/collections/nc/maps/agriculture/2007-hogs.jpg>
- <http://4.bp.blogspot.com/-ZC32VmV7VFo/TfEnmn-VCdl/AAAAAAAAACc/AAt5K5zC9U/s1600/marsh-fork3.jpg>
- [http://farm1.static.flickr.com/115/284917378\\_c38dddfa5e.jpg](http://farm1.static.flickr.com/115/284917378_c38dddfa5e.jpg)
- <http://files.earthday.net/earthdaycurriculum/environmentaljusticefiles/images/pics/image041.jpg>
- [http://pubs.acs.org/cen/img/86/i46/8646gov2\\_cleanup.gif](http://pubs.acs.org/cen/img/86/i46/8646gov2_cleanup.gif)